

Messetilbud
20% rabat

Antarktis

Natur- og hvalsafari



20 – 29. marts 2012

Bestil inden 1. december

Pris fra 34.875

pr. person i dobbelt kahyt

Pris fra 29.925

pr. person v/4 personer i 4-sengs kahyt

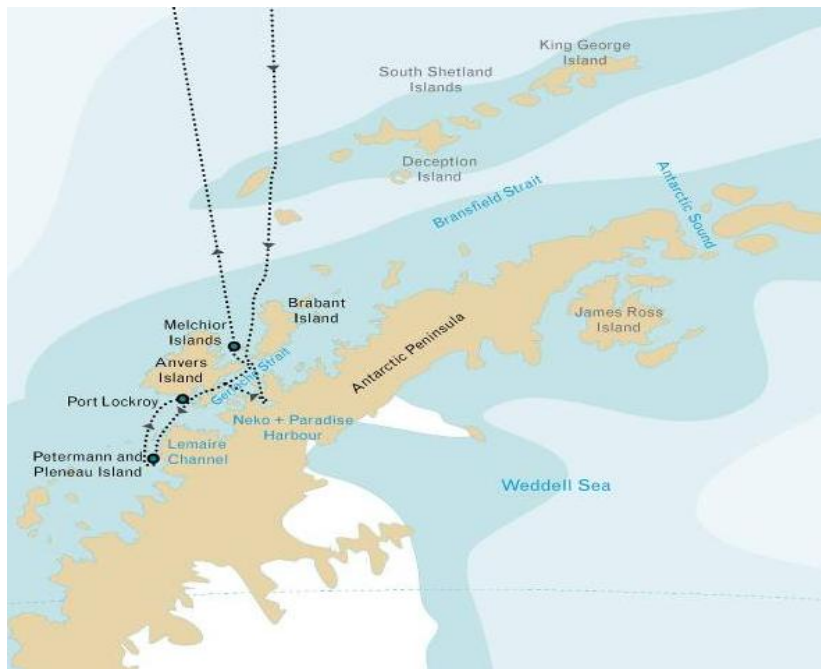
Tiffany
TOURS

Antarktis

Afrejse: 20. marts – 29. marts 29 09 nights

Afgang fra: Ushuaia - Argentina

A typical itinerary to the Antarctic Peninsula is illustrated below. All itineraries are for guidance only. Programs may vary depending on local ice and weather conditions, the availability of landing sites and opportunities to see wildlife. The final itinerary will be determined by the Expedition Leader on board. Flexibility is paramount for expedition cruises.



Day 1: Ushuaia - In the afternoon, we embark in Ushuaia, Tierra del Fuego, Argentina, the southernmost city in the world located in the shadow of the Andes and right at the Beagle Channel shore. We'll sail through this scenic waterway during the evening.

Days 2 & 3: at sea - During these two days we sail across the Drake Passage. When we cross the Antarctic Convergence, we arrive in the circum-Antarctic upwelling zone.

In this area we may see Wandering Albatrosses, Grey Headed Albatrosses, Black-browed Albatrosses, Light-mantled Sooty Albatrosses, Cape Pigeons, Southern Fulmars, Wilson's Storm Petrels, Blue Petrels and Antarctic Petrels. Near the South Shetland Islands, we glimpse at the first icebergs.

Days 4 - 7: Antarctica - We will sail directly to "High Antarctica", passing the Melchior islands and the Schollaert Channel between Brabant and Anvers Island. On Cuverville Island, a small precipitous island, nestled between the mountains of the Antarctic Peninsula and Danco Island, we will find a large colony of Gentoo Penguins and breeding pairs of Brown Skuas. If we land on Danco Island we can observe Chinstrap Penguins and possibly Weddell and Crabeater Seals. In Neko Harbour we will have the opportunity to set foot on the Antarctic Continent in a magnificent landscape of huge glacier and enjoy the landscape during zodiac cruises.

When sailing to Paradise Bay, with its myriad icebergs and deep cut fjords, we will have the opportunity for zodiac cruising between the icebergs in the inner parts of the fjords. In this area we have good chances to see Humpback Whales and Minke Whales. After sailing through the Neumayer Channel, we hope to get permission to visit the British research station and post office Port Lockroy on Goudier Island. Close to Port Lockroy we may also offer a landing on Jougla Point with Gentoo Penguins and Imperial Shags.

We sail through the spectacular Lemaire Channel to Pleneau and Petermann Island where we can find Adelie Penguins and Blue-eyed Shags. In this area there are good chances to encounter Humpback Whales, Minke Whales and Fin Whales.

A visit to one of the scientific stations in Antarctica will give you an insight about the life of modern Antarcticans working on the White Continent. Further south we may visit the Ukrainian Vernadsky Station, where we will receive a warm welcome from the station crew. Sailing north through Neumayer Channel we arrive at the Melchior Islands with a very beautiful landscape with icebergs, where we may encounter Leopard Seals, Crabeater Seals and whales.

Days 8 - 9: at sea - In the Drake Passage we have again a chance of seeing many seabirds and taking advantage of the knowledge of our lecture team.

Day 10: Ushuaia - We arrive in the morning in Ushuaia and disembark.

Forlæng eventuelt opholdet med en rundrejse i Argentina eller Chile. Vi skræddersyr gerne et program .